



It is for freedom that Christ has set us free. Stand firm, then, and do not let yourselves be burdened again by a yoke of slavery
~ Galatians 5:1

And Now There is One

May's Expenses

In May, we had a miscommunication with Equitable Gas company, which resulted in having to pay an extra month worth of the gas bill. This problem should be resolved, but even with it, the guys were able to say just below the budget

Food = \$191.76 (**\$300 budgeted**)
 Water = \$73.13 (**\$60 budgeted**)
 Electric = \$117.44 (**\$125 budgeted**)
 Gas = \$700 (**\$350 budgeted**)
 Phone/Internet = \$68.57 (**\$75 budgeted**)
 Study Materials = \$40.00 (**\$40 budgeted**)
 Car Insurance = \$0 (**\$100 budgeted**)
 Gas for Car = \$88.44 (**\$100 budgeted**)
 House Trips = \$40.28 (**\$240 budgeted**)
 Res. Director = \$1500 (**\$1500 budgeted**)
 Gym Membership = \$0 (**\$50 budgeted**)
 Insurance = \$145.17 (**\$100 budgeted**)
 Total Spent = \$2964.79 (**\$3040 budgeted**)

Donation Information:

Please Make Checks Payable to:
The L.I.V.I.N.G. Ministry
 With "Project L.I.F.E." in the memo

Send checks (by the 1st of the month) to:
2536 Maple Avenue
Pittsburgh, PA 15214

For questions about making your donation online, please contact us at
 412-302-1678

L.I.F.E. Support

A Biweekly Update on Project L.I.F.E. Volume 1 Issues 13 & 14



After about 7 1/2 months of being in the program, Torran King decided it was time for him to leave. On Sunday, June 13th he left Project L.I.F.E. to pursue his own personal goals. Read some of his reflections below.

"But he who endures to the end shall be saved" **Matthew 24:13 (NKJV)**

Can you explain your reason for leaving the program?

I came to Project L.I.F.E. to grow closer to Christ and to stay drug free. Over the last 7 1/2 months, through God's grace, I have been able to do that. Recently, I have been given the opportunity for housing that includes fellowship and accountability and I believe it is now time for me to leave the program and pursue these options.

Can you tell me things that you learned in your 7 1/2 months in the program?

One of the most important things that I learned while here at Project L.I.F.E. was about my personal finances. Mike [Ichimura] did a great job showing me the importance of taking care of my money and how to honor God with it.

What were some of your highlights of Project L.I.F.E.?

Definitely being able to get my GED and spending quality time with my son. I also appreciated my friends that came and visited me while here in the program.

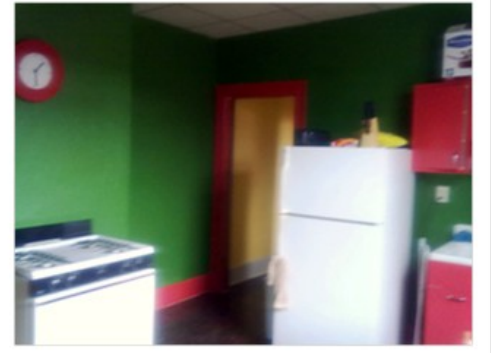


June's Expenses*

As Project L.I.F.E. winds down, it has been easier and easier for the guys to hold to their budget. Also as men have dropped out of the program, food and house trip costs have dramatically decreased. Below is the budget to date.

Food = \$94.76 (**\$300 budgeted**)
Water = \$73.13 (**\$60 budgeted**)
Electric = \$109.10 (**\$125 budgeted**)
Gas = \$350 (**\$350 budgeted**)
Phone/Internet = \$68.71 (**\$75 budgeted**)
Study Materials = \$80.00 (**\$40 budgeted**)
Car Insurance = \$0 (**\$100 budgeted**)
Gas for Car = \$120.08 (**\$100 budgeted**)
House Trips = \$156.21 (**\$240 budgeted**)
Res. Director = \$1500 (**\$1500 budgeted**)
Gym Membership=\$0 (**\$50 budgeted**)
Insurance = \$145.17 (**\$100 budgeted**)
Total Spent = \$2697.16 (**\$3040 budgeted**)

* since the month is not completed, these numbers are subject to change



Only A Few Days Left

For 8 months, Kenneth has grown tremendously in every way possible. He has become more humble, more assertive, more God-focused, and has developed ways to honor God in all aspects of his life. On Thursday, July 1st, Kenneth will be moving out of the house, and will be moving into his apartment. Mike and Jonathan have worked tirelessly to make the transition as smooth as possible. They have helped to organize a workday to paint Kenneth's apartment, helped purchase and put together all of his furniture, have moved his furniture up three flights of stairs, and have helped develop a budget for Kenneth to maintain his finances well. Kenneth is very excited about the transition and his personal growth. Please be in prayer for Kenneth as he is looking for a home church to join. Mike will be helping him over the next few weeks find the church that best suits Kenneth and his gifts.



You're Invited To A Graduation Party!!!

"When I was a child, I talked like a child, I thought like a child, I reasoned like a child. When I became a man, I put childish ways behind me" 1 Corinthians 13:11



Wednesday, July 7th, 2010
6:30 PM to 8:00 PM
2536 Maple Avenue,
Pittsburgh, PA 15214

It has long, but great first 9 months of Project L.I.F.E. We have seen many blessings as God has penetrated into the hearts of Darin, Patrick, TJ, and Kenneth. At each level of the journey there have been obstacles and set backs, but also blessings and revelations. While we are saddened that three men have left the program, we could not be more ecstatic that Kenneth was able to complete it. He has had many health barriers and other challenges that have not made this road an easy one for him. He has had to adjust to living with various roommates, and dealing with us as we figure out how to run this first program. But through it all, Kenneth persevered, and is a much better man of God because of it!



To honor God and the way that he blessed us this first run of the program, and to honor Kenneth and his perseverance, we will be holding a graduation ceremony next week. This party will be a time of food, fellowship, and testimony about how God worked during the entirety of the program. All are welcomed to attend this gala, and please feel free to bring friends along with you. All we ask is that you kindly RSVP by Tuesday, July 6th with your number of guests to 412-302-1678 or by email to chapman@livingministry.org.

The details of the celebration are to the left. We hope to see you there!!!